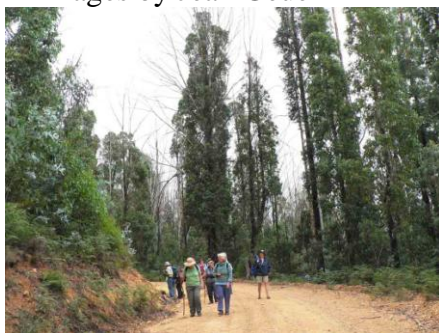


Wednesday Walk on Blundell's Creek Road - 3 February 2010

Blundell's Creek Road runs off Mount Franklin Road in the Brindabella Ranges. We unloaded passengers at the top, drove the cars to the bottom then brought the drivers back to commence the 3.5km walk. We were in tall, moist forest for most of the walk, regenerating from the 2003 fire - *Eucalyptus fastigata*, *E. viminalis*, *E. radiata* mainly. There were many juvenile blue gum seedlings (*Eucalyptus globulus*) which must have come from a nearby arboretum. There were some interesting understorey plants including *Billardiera scandens* and *B. longifolia* - both with fruit. We found an orchid - *Speculantha multiflora* - and a new plant for many of us - *Sambucus gaudichaudiana* as well as *Senecio linearifolius*, *Bursaria spinosa* and *Persicaria prostrata* flowering. The walk ended at Wark's Road where we found a shady lunch spot.

All images by Jean Geue



Blundell's Creek Rd



Regenerating eucalypts



Eucalyptus fastigata buds



Speculantha multiflora



Sambucus gaudichaudiana



Senecio linearifolius



Bursaria spinosa



Persicaria prostrata



Platylobium formosum seed pods

Plant List for Blundell's Creek Rd & Wark's Rd Walk – 28 February 2007 & 3 February 2010

? indicates that those present were unsure of the plant name

Acacia dealbata	Lomatia myricoides
Acacia falciformis	Mentha diemenica
Acacia melanoxylon	Microlaena stipoides
Acacia rubida	Olearia ? lirata
Acaena novae-zelandiae	Olearia erubescens
Asperula scoparia	Olearia phlogopappa
Astrotricha ledifolia	Panicum indutum
Bedfordia arborescens	Persicaria prostrata
Billardiera longifolia	Persoonia chamaepeuce
Billardiera scandens	Pimelea ? treyvaudia
Blechnum ? nudum	Platylobium formosum
Bursaria spinosa	Poa helmsii
Carex fascicularis	Poa meionectes
Cassinia aculeata	Poa sieberiana
Cassytha sp.	Polyscias sambucifolia
Choretrum pauciflorum	Polystichum proliferum
Clematis aristata	Pomaderris aspera
Comesperma volubile	Poranthera microphylla
Coprosma hirtella	Pteridium esculentum
Coprosma quadrifida	Ranunculus sp
Cotula alpina	Rubus parvifolius
Daviesia mimosoides	Sambucus gaudichaudiana
Daviesia ulicifolia	Senecio diaschides
Derwentia derwentiana	Senecio linearifolius
Derwentia perfoliata	Senecio quadridentatus
Dianella revoluta	Speculantha multiflora
Dianella tasmanica	Stellaria pungens
Dichondra repens	Stylidium ? armeria
Dipodium roseum	Tetrateca sp.
Echinopogon ? ovatus	Veronica calycina
Epilobium sp.	Viola betonicifolia
Eucalyptus dalrympleana	Viola hederacea
Eucalyptus dives	Wahlenbergia sp.
Eucalyptus fastigata	
Eucalyptus radiata	
Eucalyptus viminalis	
Exocarpos cupressiformis	
Exocarpos strictus	
Geranium ? homeanum	
Geranium sp.	
Glycine clandestina	
Gonocarpus tetragynus	
Gynatrix pulchella	
Helichrysum rutidolepis	
Hibbertia obtusifolia	
Hypericum gramineum	
Indigofera australis	
Lachnagrostis filiformis	
Lomandra longifolia	